



TOOL BOX TALKS

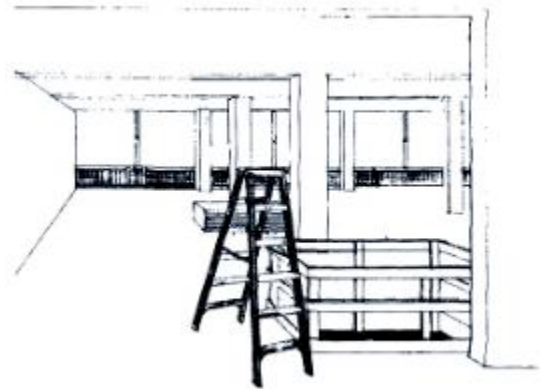


FALL PROTECTION REQUIREMENTS APPLY!

The Occupational Safety and Health Administration (OSHA) addresses fall protection standards in 29 CFR 1926 – Subpart M. The fall protection requirements for ladders are covered in Subpart X. These regulations specify protection levels and equipment that need to be in place to protect workers from needless injuries and even death. OSHA’s regulations identify the need to protect employees exposed to falls greater than 6 feet from the walking or working surface. Standard protection requirements include the use of a guardrail system, a safety net system, or a Personal Fall Arrest System (PFAS).

A sometimes overlooked situation on the job site is where an individual is required to work from elevated positions above the installed railings, such as when ladders are used to access fire sprinkler systems, electrical systems, HVAC systems or other overhead installations. This situation is common near floor openings such as elevator shafts, stairwells and unfinished sides of the building being erected. The railings provide fall protection while working on the floor level. Once the ladder is ascended, the protection on the open side is no longer afforded.

In instances such as these, the fall hazard must be eliminated. This can be done by installing a substantial cover or a safety net over the hole or by requiring employees to wear a Personal Fall Arrest System (PFAS).



**Don't kid yourself...
Fall protection requirements apply!**

For more information about fall protection in construction, visit the OSHA Website at WWW.OSHA.GOV